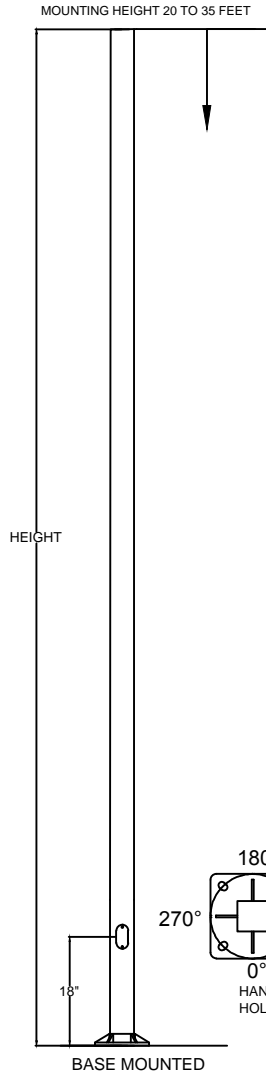


# SQUARE STRAIGHT ALUMINUM POLES

NP SERIES FREE STANDING SQUARE ALUMINUM POLES  
 MAXIMUM HEIGHT 35 FT.  
 HAND HOLE C/W GROUND LUG  
 FINISH: ROTARY POLISH OR POWDERCOATED

**ORDERING EXAMPLE: NPS60C22AB**  
 NPS-SQUARE STRAIGHT SERIES  
 60-DIAMETER AT BASE IS 6 INCHES  
 DIAMETER AT TOP IS 6 INCHES  
 C - WALL THICKNESS IS .188  
 22 - POLE IS 22 FEET HIGH  
 AB-CAST ALUMINUM BASE (DB - DIRECT BURIAL)

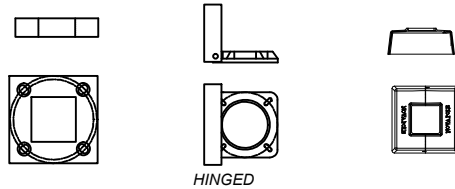


MODEL	WALL THICKNESS	LENGTH	20' @ POLE TOP		EPA (MPH) recommend to not exceed				
			BUTT DIAM	TOP DIAM.	100	115	130	150	
NPS40C20AB	0.188	20'	4"	4"	5.9	4.5	3.5	2.8	
NPS50C20AB	0.188	20'	5"	5"	12.4	9.6	7.6	6.1	
NPS60C20AB	0.188	20'	6"	6"	17.3	12.8	9.4	6.9	
NPS60D20AB	0.25	20'	6"	6"	17.7	13.1	9.6	7	
		<b>25' @ POLE TOP</b>							
NPS50C25AB	0.188	25'	5"	5"	7.3	5.6	4.4	2.9	
NPS60C25AB	0.188	25'	6"	6"	9.8	6.4	3.8	1.7	
NPS60D25AB	0.25	25'	6"	6"	10.1	6.5	3.8	1.8	
		<b>30' @ POLE TOP</b>							
NPS60C30AB	0.188	30'	6"	6"	5.5	2.7	N/A	N/A	
NPS60D30AB	0.25	30'	6"	6"	5.6	2.8	N/A	N/A	
		<b>35' @ POLE TOP</b>							
NPS60D35AB	0.25	35'	6"	6"	1.7	N/A	N/A	N/A	

THE ABOVE POLES ARE ONLY EXAMPLES OF OUR AVAILABLE LINE OF POLES. PLEASE CALL OUR ORDER DESK TO INQUIRE ABOUT YOUR REQUIREMENTS

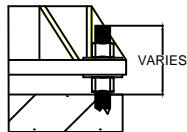
## 2 PC. CAST BASE COVERS (ASK OUR SALES DESK)

PLEASE CONTACT OUR SALES DESK FOR INFORMATION ON OUR TWO PC. AND STRUCTURAL BASES

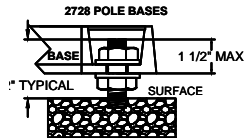


STANDARD POLE SUPPLIED WITH-  
 : GROUND BAR & LUG  
 : NUT COVERS

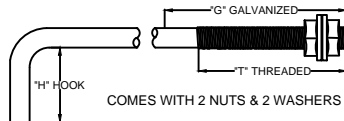
- OPTIONS (AS AVAILABLE)
- POWDERCOAT
  - ANCHOR BOLTS
  - 2 PC CAST BASE COVERS
  - TENONS OR FIXTURE DRILLINGS
  - TOP CAP
  - ELECTRICAL OUTLETS
  - BANNER ARMS
  - BREAKAWAY TRANSFORMER BASES
  - BREAKAWAY CONNECTORS
  - CUSTOM COLORS
  - TAMPER RESISTANT HDWRE
  - VIBRATION DAMPERS (IF REQUIRED)



ANCHOR BOLTS PROJECTION



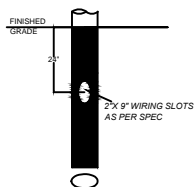
## ANCHOR BOLTS



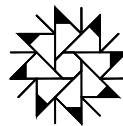
POLES ARE FABRICATED FROM 6063-T4 SEAMLESS ALUMINUM AND HEAT TREATED TO T6 AFTER WELDING...

WELDING CSA CERTIFIED TO CWB 47.1, 47.2

## DIRECT BURIALS



BELOW GRADE SECTION OVALIZED, POWDERCOATED, AND RUBBER PIPE WRAPPED



NOVA POLE Industries Inc.  
 64 MA-TE-WAY PARK DRIVE  
 Renfrew, On. Canada  
 K7V 2L5

Tel: 613-431-7653  
 Fax: 613-431-7655  
 www.novapole.com

THIS DRAWING IS THE PROPERTY OF NOVA POLE INDUSTRIES INC. AND CONTAINS CONFIDENTIAL INFORMATION. REPRODUCTION OF THIS DRAWING IN FULL OR PART OR DISCLOSURE OF ANY INFORMATION FROM IT WITHOUT EXPRESS WRITTEN PERMISSION OF NOVA POLE INDUSTRIES INC. IS NOT PERMITTED.