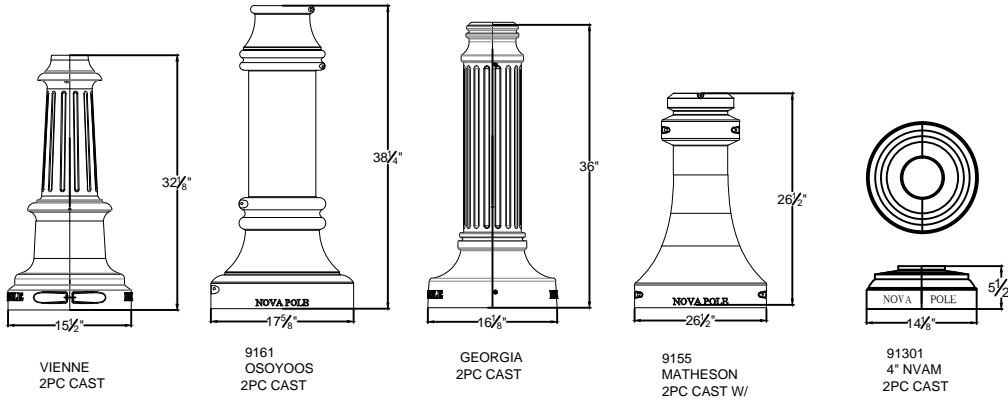


## 4" - 2 PC. CAST BASE COVERS



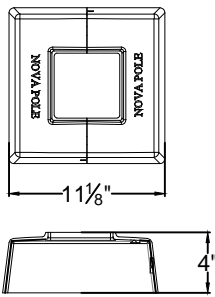
VIENNE  
2PC CAST

9161  
OSOYOOS  
2PC CAST

GEORGIA  
2PC CAST

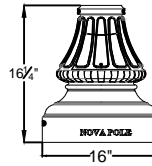
9155  
MATHESON  
2PC CAST W/  
COLLAR 91550

91301  
4" NVAM  
2PC CAST



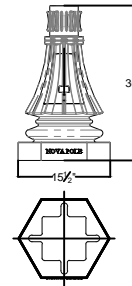
9139  
4" SQ. POLE COVER  
2PC CAST

### 2PC WASHINGTON BASE COVER



WASHINGTON  
2 PC BASE COVER

### STRUCTURAL BASE CASTING

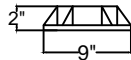


9156  
CONFLANS BASE  
FOR 4 3/4" FLUTED POLE  
11" BCD  
1" ANCHOR BOLTS

## 4" CAST BASE PLATES

ALL BASES BELOW ACCEPT ONLY 3/4" ANCHOR BOLTS

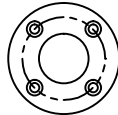
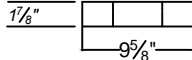
9111  
AB-4  
CAST BASE



7" BCD

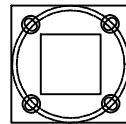
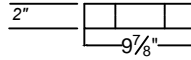
SPUN NUT CVRS

9100  
4"-2728-R  
CAST BASE



6 3/4" BCD

9101  
4SQ-2728-S  
CAST BASE



8 1/2" - 9 1/2" BCD

THIS WILL NOT FIT UNDER SQ. BASE  
COVERS

9102  
4RD-2728-H  
HINGED CAST BASE



7 1/2" - 9" BCD

9103  
4SQ-2728-H  
HINGED CAST BASE



7 1/2" - 9" BCD



NOVA POLE Industries Inc.

SIZE	DATE: - 23/01/2015	DWG. NO. <b>APPROVAL</b>	REV
SO NO.	SHEET 1 OF 1		

### 4IN INFORMATION SHEET

DESCRIPTION	REVISION	MADE	CHKD	SUBD	APPROVED	INSP	DATE

SCALE	11	CUSTOMER DWG. NO.
NTS		-

THIS DRAWING IS THE PROPERTY OF NOVA POLE INDUSTRIES INC. AND CONTAINS CONFIDENTIAL INFORMATION. REPRODUCTION OF THIS DRAWING IN FULL OR PART OR DISCLOSURE OF ANY INFORMATION FROM IT WITHOUT EXPRESS WRITTEN PERMISSION OF NOVA POLE INDUSTRIES INC. IS NOT PERMITTED.